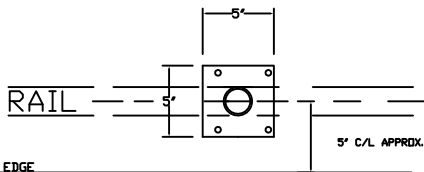


MATERIAL

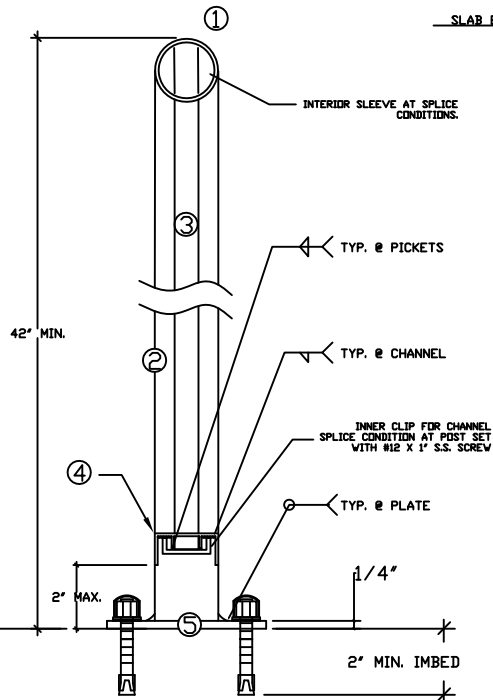
- 1) 2" ROUND X .125" TOP
- 2) 2" ROUND X .125" POST
- 3) .75" ROUND X .0625" PICKETS
- 4) 2" X 1" X .125" CHANNEL
- 5) 5" X 5" X 1/4" BASE PLATE
- W/(4) 3/8" X 3" S.S. WEDGE ANCHORS WITH PLASTIC DOME CAPS



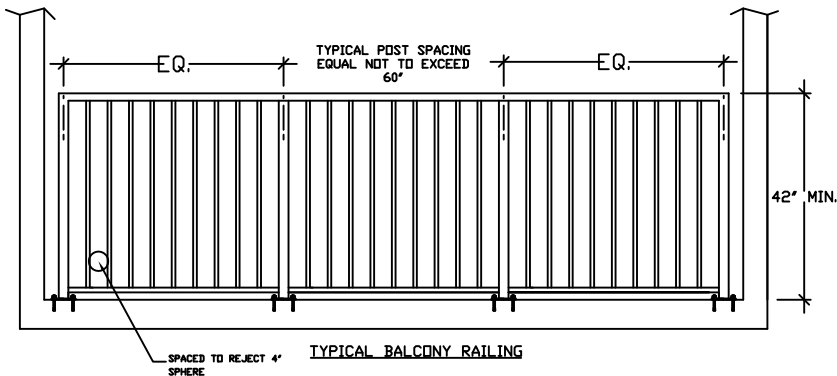
RAIL FROM SLAB EDGE

NOTES:

- 1) **MATERIAL:** EXTRUDED ALUMINUM GRADE 6000 SERIES T5 OR T-6 AS AVAILABLE.
- 2) **FABRICATION:** ALL RAIL SECTIONS TO BE WELDED UNITS IN THE LONGEST LENGTHS PRACTICAL TO FACILITATE HANDLING AND FINISHING CONDITIONS.
- 3) **FINISH:** STANDARD COLOR
- 4) DUE TO VARIATIONS IN MATERIALS AND FABRICATION, A REASONABLE DEGREE OF VARIATION CAN BE EXPECTED WITH REGARD TO SPLICE JOINTS.



TYPICAL THRU RAILING SECTION BALCONIES



ELITE CUSTOM RAILING	
E-401 PIPE PICKET RAILING	
DATE:	TYP. BALCONY RAIL
05-04-06	